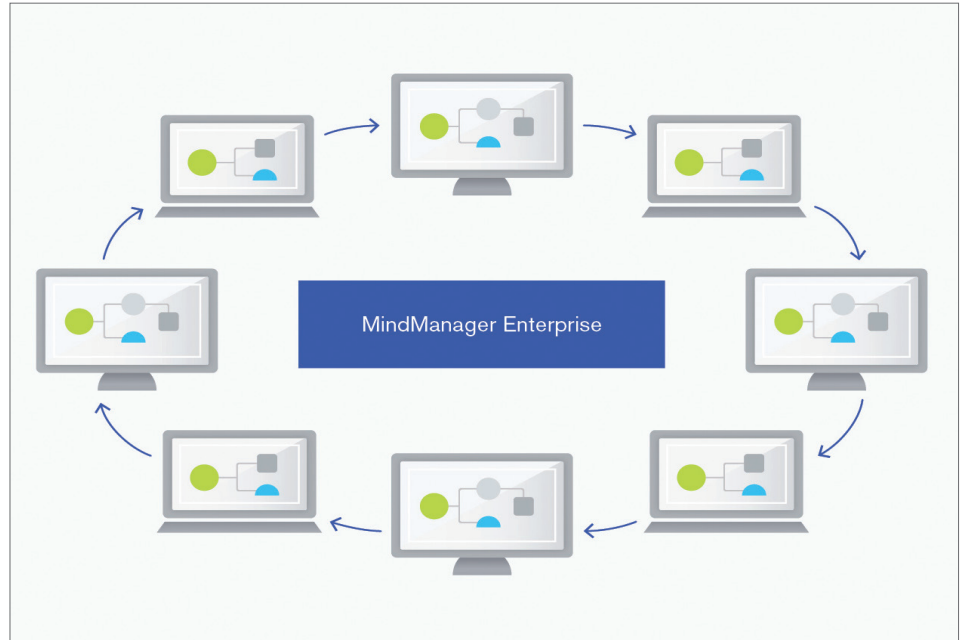


MindManager Enterprise

A Visual Approach to Coordinating Projects, Sharing Knowledge, and Increasing Productivity

MindManager Enterprise combines Mindjet's leadership mind mapping, diagram creation, and visual business and project planning tools with patented data integration and flexible sharing options. The result is improved enterprise communication and collaboration on key business initiatives.



Customer Uses:

- Brainstorming and Problem Solving
- Individual Productivity
- Meeting Management
- Presentation Creation
- Project & Process Management
- Information/Knowledge Management
- Business Planning and Analysis

Key Capabilities:

- Industry-leading mind mapping
- Project and Business Planning Templates, Tools and Chart Views
- Flowcharts and diagrams
- Financial calculations
- Microsoft® SharePoint® Integration, including Office 365™ SharePoint
- Microsoft Office® and Project® integration
- MindManager Reader for organization-wide communication
- Data integration options and APIs

Technical Requirements

For MindManager 2016 for Windows and MindManager Reader for Windows:

- Microsoft® Windows® 10 (32-bit and 64-bit), Microsoft Windows 8 and 8.1 (32-bit and 64-bit) or Microsoft Windows 7 (32-bit and 64-bit), includes Service Pack 1 released in Feb, 2011
- IBM® or compatible Pentium® processor (1 GHz or greater) with 2 GB RAM or greater
- 830 MB available disk space
- SVGA (1024 x 768/16-bit color or greater)
- Microsoft .NET 4.0 or higher
- For the "SharePoint Linker" functionality: SharePoint authentication types NTLM, Forms Based, SAML for SharePoint 2010 or 2013
- For additional requirements to use certain features, please see www.mindjet.com/support

For MindManager v10 for Mac:

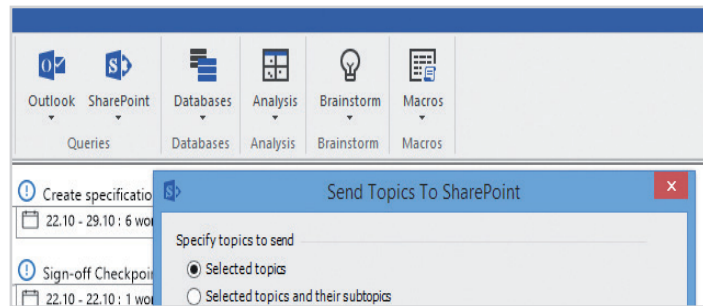
- Mac OS X version 10.6 or greater, 250 MB available disk space, 1024 x 768 or greater display resolution
- For additional requirements to use certain features, please see www.mindjet.com/support

For MindManager Server Software:

- SharePoint 2010 [Foundation, Server, Dedicated Office 365]
- SharePoint 2013 [Foundation, Server, Dedicated Office 365]
- Adobe Flash Player (for client) Flash 10 (or above)
- Browser for SharePoint 2010: Internet Explorer 8 & 9 Recommended, Firefox 17 & 18
- Browser for SharePoint 2013: Internet Explorer 9 and above, Firefox 17 and above, Chrome (latest public release), and Safari (latest public release)

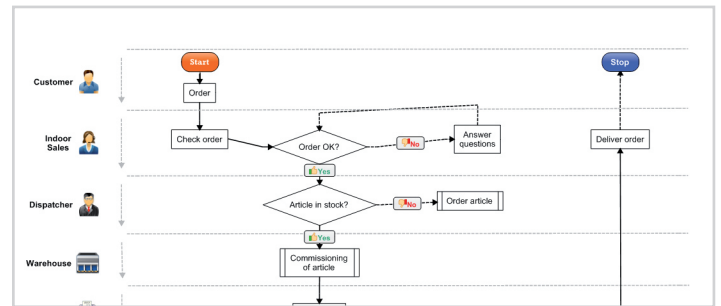
What's Included

- MindManager for Windows desktop software, including built-in "Linker" capabilities for connecting and synchronizing with Microsoft SharePoint
- MindManager for Mac desktop software
- MindManager Reader for Windows, which enables map viewing and more



- MindManager software for SharePoint servers (for map sharing via SharePoint)

Other benefits due to our MindManager Enterprise License Program with Mindjet Software Assurance and Support (MSA) include volume pricing, service, and support.



Productivity, Communication and Collaboration

Brainstorming, organizing information, creating presentations, developing strategic plans, and coordinating projects with mind maps, flowcharts and other diagrams increases clarity and understanding. Improve analysis, communication and decision-making with MindManager mind maps and diagrams.

With MindManager Enterprise, sharing options include:

- The MindManager Reader for Windows, available exclusively for MindManager Enterprise 2016 customers, enables anyone in the organization to view and interact with maps created by MindManager Enterprise users.
- Export to Microsoft Office and Project.
- Share MindManager maps within SharePoint (viewing and optional editing).

Visual Project and Process Management

Successful project and process management depends on effective management of expectations and commitments. MindManager Enterprise helps keep teams in alignment on the decisions and tradeoffs that determine if projects and re-engineered processes will meet goals and deadlines.

- Create a blueprint for success by defining goals, prioritizing issues, capturing stakeholder input, reviewing budgets, and validating requirements—all in one application.
- Create detailed flowcharts and other diagrams to plan process improvements.
- Gain commitment on assignments and due dates in MindManager Enterprise 2016 for Windows, then take advantage of bi-directional synchronization with SharePoint task management to coordinate project implementation.
- Optional export to Microsoft Project.

Information and Knowledge Management

Finding and utilizing information in corporate repositories can be challenging. Capturing and sharing the expertise of valued employees can be even more difficult. MindManager Enterprise can help:

- Create knowledge maps that display notes, attachments, and links compiled and organized by senior employees to share knowledge for key business processes.
- Develop shared information maps that consolidate files stored across SharePoint sites, other content repositories, and on the web. Organizing information by project, department or topic makes it easy for people to quickly find the information they need.
- Individuals can easily search SharePoint sites and incorporate SharePoint data into MindManager maps. Content search, filtering, and indexing features in MindManager make it easier to work with large amounts of information. Data can be synchronized between MindManager Enterprise for Windows and SharePoint.

Mindjet, the Mindjet logo and MindManager are registered trademarks of Mindjet, in the U.S. and other countries. Microsoft, Microsoft Windows, Microsoft Office, SharePoint, PowerPoint, Excel and Outlook are trademarks of Microsoft Corporation, in the U.S. and other countries. Mac is a trademark of Apple, Inc. in the U.S. and other countries. IBM is a trademark of IBM Corporation, registered in many jurisdictions worldwide. Mozilla and Firefox are registered trademarks of the Mozilla Foundation. © 2012 Google Inc. All rights reserved. Google and Chrome are trademarks of Google Inc. Adobe, Acrobat, and Flash are registered trademarks of Adobe Systems Incorporated in the U.S. and/or other countries.